

COLLECTOR'S CORNER

Museum of the Month

Ahead of the Curve: The Newark Museum 1909-2015

Judy Penz Sheluk
 All images courtesy of The Newark Museum

NEW YORK, NY — Celebrating its 61st year, the Winter Antiques Show is considered America's most distinguished antiques show, featuring exceptional objects exhibited by 73 specialists in American, English, European, and Asian fine and decorative arts from antiquity through the 1960s, all vetted for authenticity.

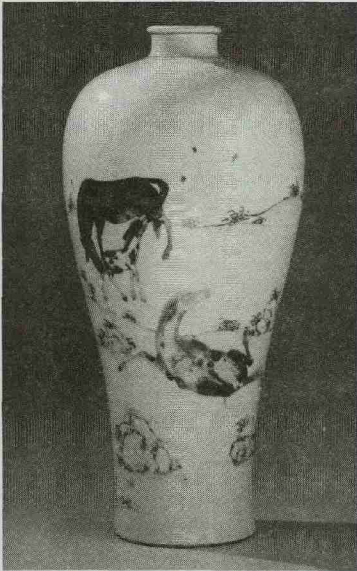
The 2015 loan exhibition, *Ahead of the Curve: The Newark Museum 1909-2015*, will feature exceptional pieces from the Newark Museum (NM) in Newark, N.J. Celebrating its 106th year, NM has consistently been "ahead of the curve," being at the forefront of collecting and exhibiting since its inception. The museum was the first institution to acquire an oil painting

of Yosemite, the first to feature outsider art with a William Edmondson piece, and the first to give a one-man show to a living American artist (Max Weber). Additionally, it possesses the first abstract painting ever completed by an American artist, a work done by Arthur Dove (1880-1946).

One of the impressive dualities of the museum is their staff's ability to build on this solid American foundation, while looking outward towards the world. NM was also the first to recognize and explore lacquer from all regions of Asia, and is the only museum covering the "Arts of Africa" from the Mediterranean to Cape Hope. As the only museum in the West with a consecrated altar, built in 1935 to celebrate the

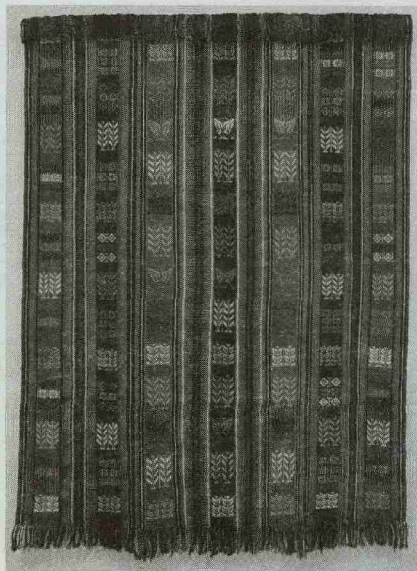
Tibetan collection that began in 1911, NM shows its consistent foresight and dedication. This will be reflected in every piece highlighted at the 2015 Winter Antiques Show Loan Exhibition, *Ahead of the Curve: The Newark Museum, 1909-2015*. Here is a small sampling:

The Winter Antiques Show will be held at the Park Avenue Armory, 671b Street and Park Avenue, New York, from Jan. 23-Feb. 1. Hours are 12 p.m.-8p.m. daily, except Sundays and Thursday, 12 p.m.-6 p.m. Daily admission to the show is \$25, which includes the show's award-winning catalogue. To purchase tickets for the Opening Night Party (Jan. 22) or Young Collectors Night (Jan. 29), call 718-292-7392



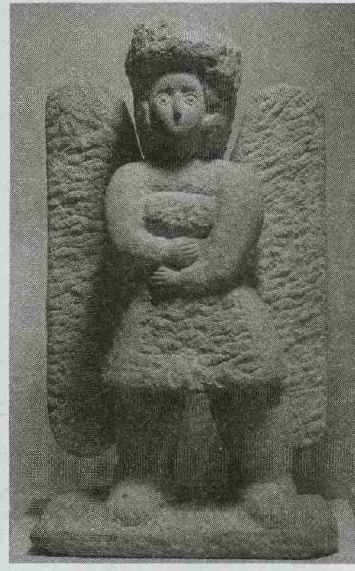
Meiping Vase with Seven Horses and Willow Tree. China, Kangxi Period (1661-1722), Qing Dynasty (1644-1911). Porcelain, under-glaze blue and copper-red. 18 1/2 high.

In 1923 the Newark Museum was the first museum to present a ground-breaking traveling exhibition, *China: the Land and the People* which showcased Chinese art from the historic to the contemporary (1920s) life in China.



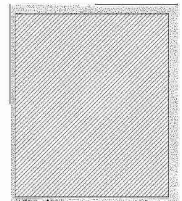
Unrecorded Malagasy artist (Madagascar). Shawl (*lamba akotofahana*). Late 19th century. Silk, linen. 84 x 62 in.

Among the most celebrated of Madagascar's wide-ranging textile traditions are the silk shawls known as *lamba akotofahana*, distinguished by their brilliant colors, intricate designs and laborious method of production. This cloth, acquired by Newark Museum founder John Cotton Dana in 1928, speaks to the geographic range of the collection.



William Edmondson (1874-1951). Angel. Carved stone, 1932-38. 25 x 13 7/8 x 6 5/8.

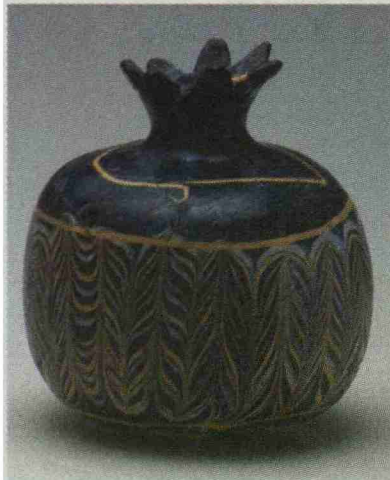
The Newark Museum was the first American museum to exhibit folk painting and sculpture, in 1930 and 1931. Newark has the second largest public collection of Edmondson sculpture in the world.



or visit www.WinterAntiquesShow.com.

All net proceeds from the show benefit East Side House Settlement (ESHS), which provides access to quality education and technology training as gateways out of poverty

to students in the South Bronx, one of the nation's poorest congressional districts. ESHS's goal is to help motivated students graduate from high school, enroll in college, and build the skills necessary to secure good jobs.



Pomegranate shaped vessel. Egypt. 12th century BCE. Core-formed glass, 3 3/4 x 3 3/4 in.

This rare Egyptian vessel is part of one of the finest ancient glass collections in the United States.



Gau Zur-gyad (Necklace). Tibet, 1875-1950. Gold, pearls, turquoise, coral precious and semi-precious stones. 13 1/2 in.

Beginning in 1911, Tibetan art has been collected, exhibited and published by the Newark Museum. Tibetans prize turquoise, coral, gold (sometimes coated with a reddish hue) and banded light and dark chalcedony stone (called *gZhi* in Tibetan).